

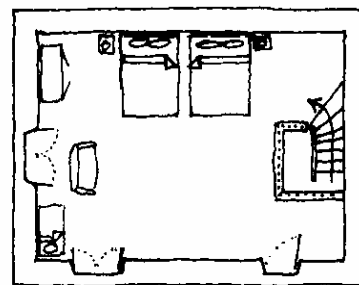
## Southern Quercy Comfortable Mill Cottage with POOL

(sleeps 2/4)

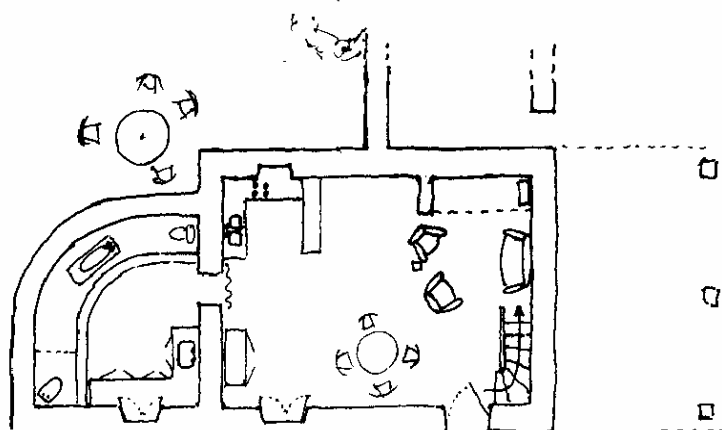
Situated in the Tarn-et-Garonne département just south of the border with the Lot département, this very attractive, spacious, and well furnished cottage is 2km north of the small market town of Montaigu-de-Quercy (baker, butcher, grocer, market, café, restaurant etc, also doctor, dentist, 2 tennis courts). There are riding stables nearby in Bourgade-Visa and Lauzerte. The surrounding peaceful landscape is characterised by bold, gently rolling hills, bearing crops of maize, sorghum, sunflowers, sugar beet seed, a few vineyards. The Lot river valley, the towns of Fumel, Puy l'Evêque, are 20km north.

Accommodation comprises: one large upstairs bedroom with two small double beds (1m25), wardrobe, settee, cot, and staircase down to spacious, most agreeable living room with open fireplace, comfortable double sofa-bed and 2 matching armchairs, dining table and chairs, buffet etc, and a most attractively fitted kitchenette (double sink, 2-electric and 2-gas hob, refrigerator etc). A curtained doorway leads to large bathroom (basin, bidet, bath, WC). This building was once the bakery to the nearby mill, now the home of the present owners. The 11m pool stands between two arms of the little millstream, and is reached by a little bridge.

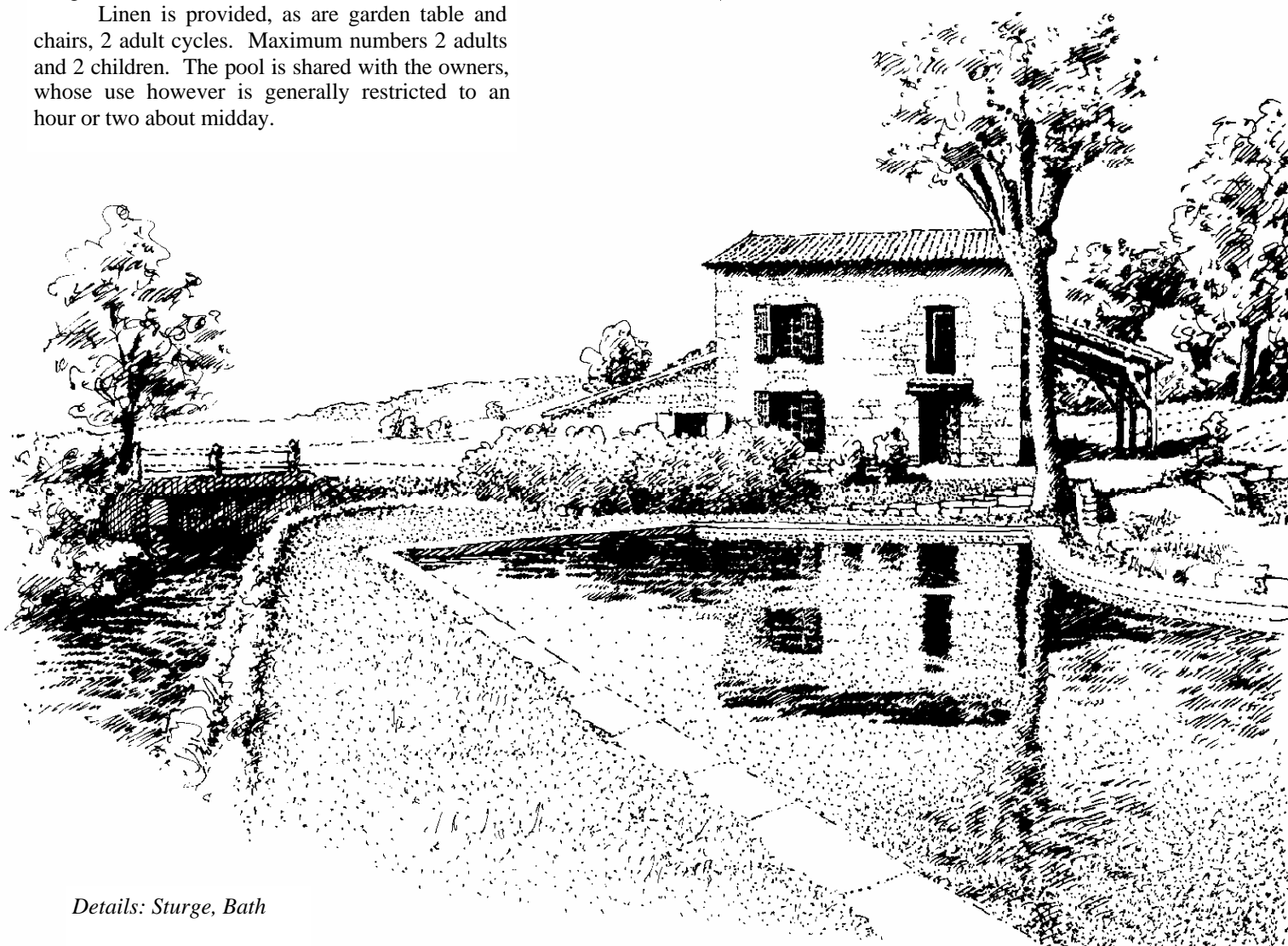
Linen is provided, as are garden table and chairs, 2 adult cycles. Maximum numbers 2 adults and 2 children. The pool is shared with the owners, whose use however is generally restricted to an hour or two about midday.



first floor (scale 1:200)



ground floor

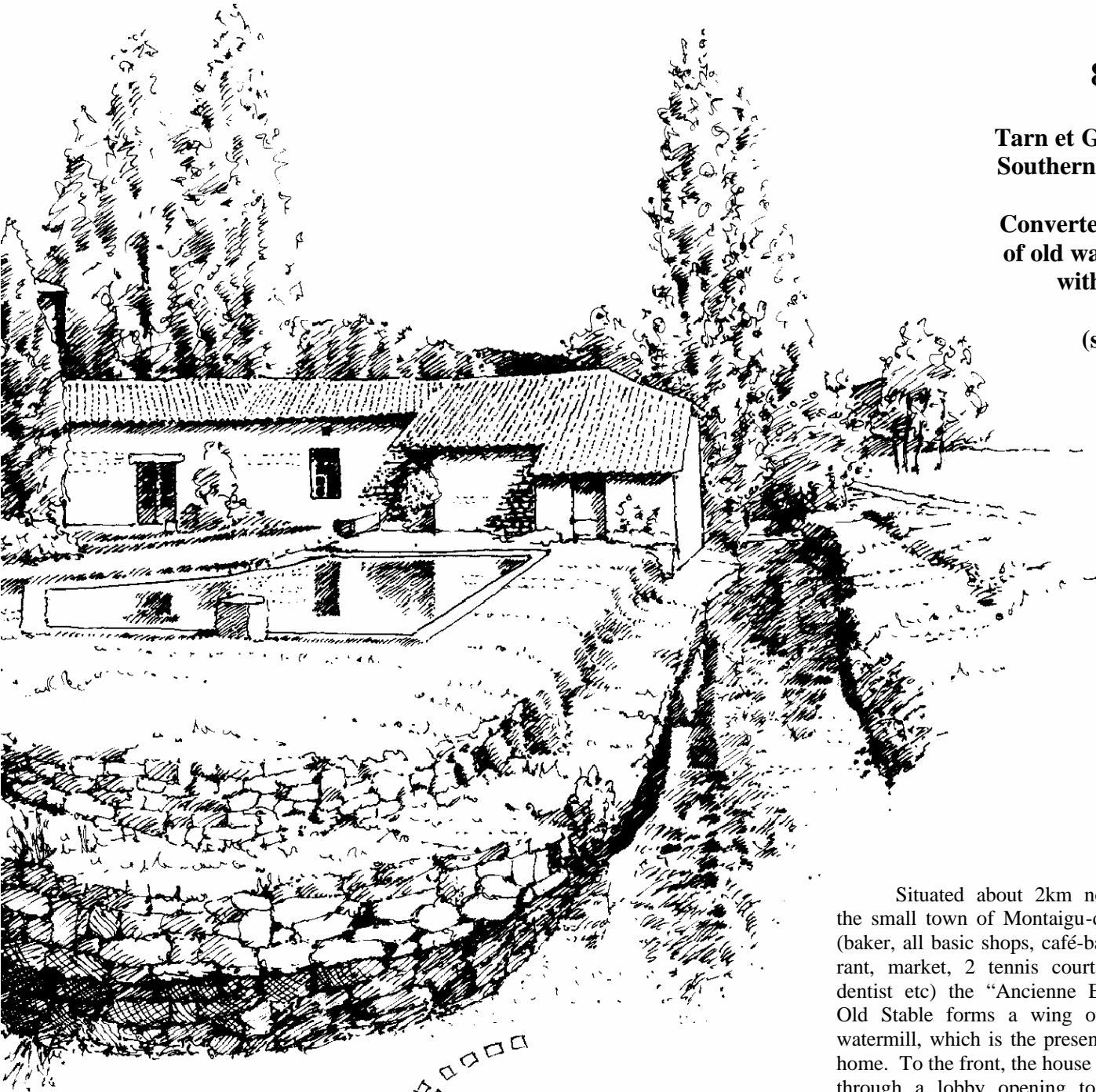


8205B

Tarn et Garonne,  
Southern Quercy

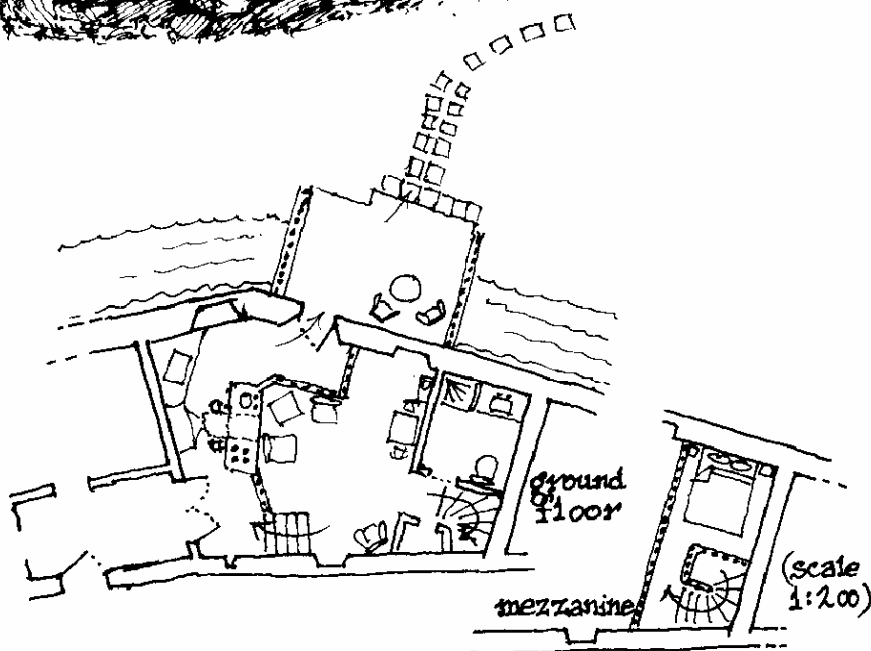
Converted stable  
of old water-mill  
with POOL

(sleeps 2)



Situated about 2km north from the small town of Montaignu-de-Quercy (baker, all basic shops, café-bar, restaurant, market, 2 tennis courts, doctor, dentist etc) the “Ancienne Etable” or Old Stable forms a wing of the old watermill, which is the present owners’ home. To the front, the house is reached through a lobby opening to a sunny courtyard, which in turn leads to the 12.7m pool, (depth 1m to 1m70) which is also used by tenants of the other little cottage, and occasionally by the owners. To the rear, a door opens to a small patio (with table and chairs) over the mill-stream and path to a bridge over the main stream and the access lane and parking space, in a little orchard.

Accommodation is essentially one large living space, with, on the upper level, stand-alone unit with 4-ring hob, sink, refrigerator, washing machine and slide-out breakfast table, large cupboard, stove. On the lower level, down 5 steps, are 2/3 easy chairs, tables, 2 upright chairs etc and pleasantly tiled bathroom (bath, basin and WC). Spacious cupboard, and well-made staircase up to iron-balustraded mezzanine above bathroom, with 1m40 double bed etc. Throughout is a tasteful atmosphere of restful privacy.



*Details: Sturge, Bath*