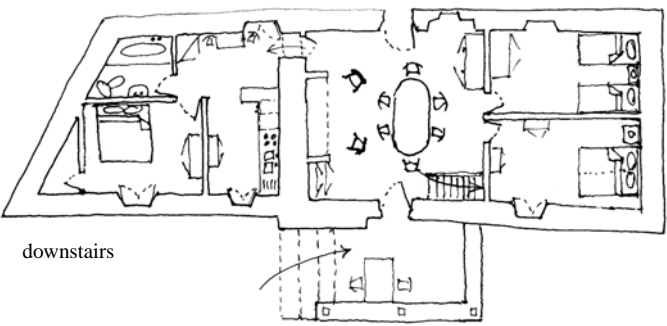


upstairs



downstairs

Saint Chamarand near Gourdon, N Lot

Very romantic village house with spacious garden, POOL and fine views

(sleeps 8-10)

The village of St Chamarand lies just off the D704 about 12km southeast of Gourdon and 33km north of Cahors. The village itself is very pretty, rather like a stage set, and the surrounding countryside, gently rolling meadows punctuated by rows of willow and poplar, set within a framework of oak-clad hills which typifies the Lot, has been an inspiration to painters renowned and otherwise, such as Henry Martin, the local master of his art in the 1900s.

In summer there are many “festivals” in the region, concerts, recitals, opera, exhibitions, and at all times the numerous markets are tempting to eye and palate alike. St Chamarand has no shops, but in nearby St Germain-du-Bel-Air (4km) may be found all basic shops, restaurants etc, and very full facilities in Gourdon. To the northeast and the north the Dordogne is 30km distant, as are Rocamadour and the underground river chasm or “gouffre” of Padirac to the northeast, set in the Gramat “Causse” or limestone plateau which rises eastwards toward the Auvergne and the Massif Central and whose quiet boundless scenery is home to the largest underground river system in France – a pot holer’s paradise.

The house stands at the edge of the village, on rising ground with commanding landscape views. Accommodation is on two levels: on the ground floor there are 3 bedrooms (1 double and 2 twin) a neatly fitted bathroom (with bath, basin, WC), a well-arranged small kitchen (with 4-ring gas cooker with oven, stainless steel sink, refrigerator, washing machine, dishwasher, cupboards etc and a small table) and a spacious and charming living room with two wooden arm-chairs, dining table and chairs, cupboards, sideboard etc. This enchanting room, typical in its Quercynois style, also features an attractive old stone sink or “évier” and an efficient open fireplace, and opens to a covered “bolet” or verandah, with table and chairs, overlooking and with steps down to the garden, bounded to the west by a wall and partly shaded barbecue terrace, and to the east by a (closed) barn, just beyond the entrance gate and parking area. On the first floor is a large living space with two single beds, which can be used as extra sleeping accommodation, plus a separate bedroom with double bed, and a shower room with basin and separate WC.

The 8 x 4m pool (depth 1m20 shallow end increasing to 2m), now entered by broad steps and surrounded by well-made wooden decking, has parasol and sunloungers etc, and enjoys privacy and wonderful views.

Details: Sturge, Bath